



Description

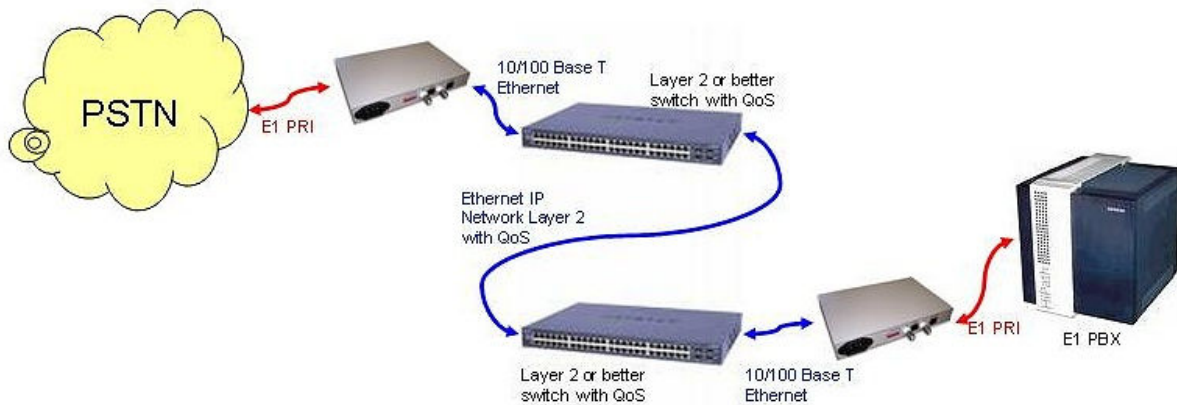
Precision's PP100E1 series converts to- and from E1 signal to- and from 10/100Mbps Ethernet. The PP100E1 can relay E1 circuits across Ethernet networks, thereby extending Primary rate Telco signals across an Ethernet platform without decoding the signal. The PP100E1 uses Digital phase lock to extract clock signals and 2M interference suppressing connection to provide a reliable wideband E1 link. The PP100E1 software handles en- and decoding, information modification, and the transfer of alarm signals.

Key Features

- E1 signal via 75Ω BNC Tx/Rx connectors, or via 120Ω RJ45 Connector
- 1x 10/100 Base T Ethernet connector RJ45
- Internal Mains switch-mode power supply
- Diagnostic modes include Analog-, Digital-, and Remote loopback (framing)
- Clock modes include External clock, Line slave clock, and inter-clock
- Auto MDX (cross over) Ethernet ports
- MAC address filtering and ageing control
- Remote terminal management via PHP
- Compact desktop unit design

Typical applications

Typical application: Extending an E1 circuit over IP network for driving a PBX at second location



Ethernet

Connector	RJ-45 Auto MDIX	10/100 Base TX autoneg
Ethernet function	IEEE802.1Q	IEEE 802.3
MAC table	4096 entries	
Memory buffer	64MB	

E1 (PRI)

Line Rate	2.048Mbps	(+/- 50bps)
Line coding	HDB3	
Interface standard	ITU-T G.703	
E1 impedance	75Ω (unbalanced)	120 Ω (balanced)
Connectors	Dual BNC unbalanced	RJ-45 balanced
Jitter tolerance	Finer than G.742, G.823	

System

BER	10 E-9 max
MTBF	> 100000 Hr

Dimensions

Dimensions	210mm(W)
	140mm(L)
	30mm(H)

Power

Stand-alone unit	SA AC mains	175-220V AC 50-60Hz	10Watt max
------------------	-------------	---------------------	------------


Environmental

Storage temperature	-40°C to +85°C
Operating temperature	0°C to +50°C
Humidity	0 to 95% (non cond)

Quality standards

ISO 9001 certified
ICASA approval pending

Ordering information

Model	Function	Interfaces	Description
1-Channel E1 PRI to Ethernet converter Bi-Directional			
PP100E1T-SA220		10/100 E1	E1 to Ethernet converter 2Mbps transparent, with VLAN support and SNMP

Note: A pair of the same model units are required to establish a link

Data Sheet Version 1.0 2010/01/20